

INTRODUCTION

Class 3 malocclusion is one of the most difficult occlusal problems to be treated by orthodontists, especially in adults. This type of malocclusion should be evaluated from the point of view of the mandibular position, as it can often be treated only with appliances instead of orthognathic surgeries, improving the quality of life of patients, reducing the risks related to performing surgeries.

I present a case of Prognathism (Class 3) and deep bite, considered by other Dentists, of surgical treatment only, and that was treated exclusively with Removable Orthopedic Appliances and Braces.

The patient complained of pain when chewing hard food and during dental procedures due to the difficulty in keeping the mouth open.



OBJECTIVES

Demonstrate the importance of a more accurate, detailed and complete analysis that takes into account the functional criteria of the patient to know how to identify which cases can be treated through functional appliances associated with orthodontic appliances, without the need to perform orthognathic surgeries. The treatment using neurophysiological stimulation should be understood and studied so that it is an alternative for the treatment of cases of this type of malocclusion.

RESULTS

The result of the treatments performed through the technique of mandibular repositioning and muscle re-accommodation is surprising because it allows the Orthodontist to treat severe malocclusions through stimuli and remodeling in the condyle of the TMJs.



In this way we improve the quality of life of patients, bringing comfort in chewing, reestablishing aesthetics and function without any type of surgical intervention, even in adult patients who have already finished all mandibular bone growth.

“Knowledge is only valuable when it is shared”

Marcos Lenine



METHODS & MATERIAL

Male patient, 31 years old, asian, with Class 3 malocclusion (Prognathism)

A careful analysis of CT images, evaluation of TMJ spaces, mandibular position and size, cephalometric evaluation, muscle function and body posture were performed.

After the mandibular recoil test, it was detected that the patient was able to place the teeth "top to top", which indicates the possibility of treatment with Appliances.

Treatment by Functional Orthopedic Appliances has been proposed:

- SN3 (Simões Network) 3 associated with Equiplan (PLANAS Balancer)
- SN7 (Simões Network) 7,
- Orthodontic Braces

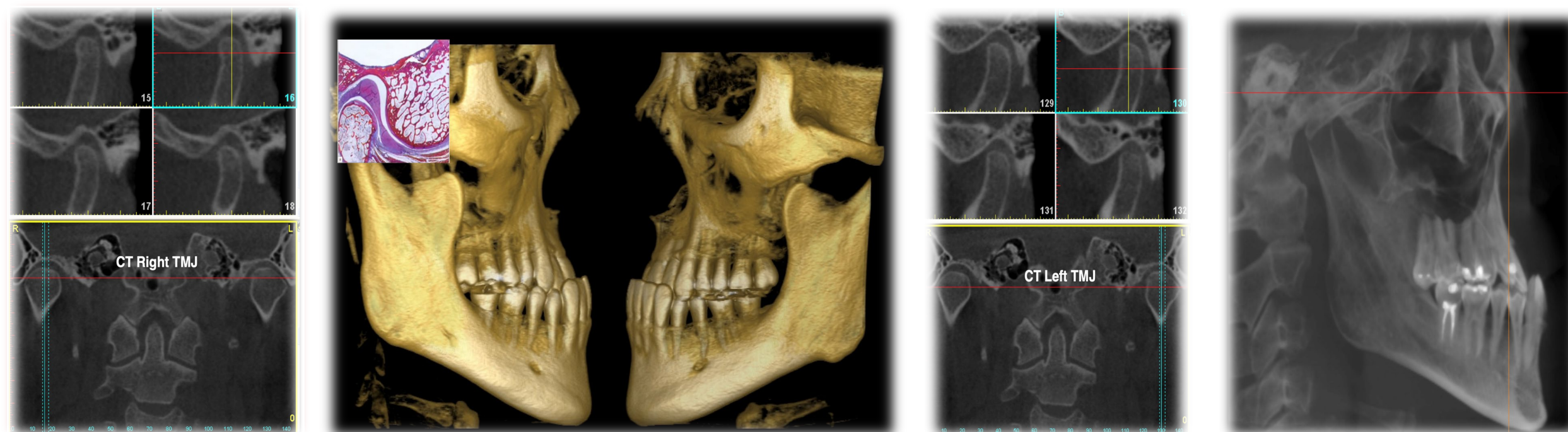


Test of position
Top
Top

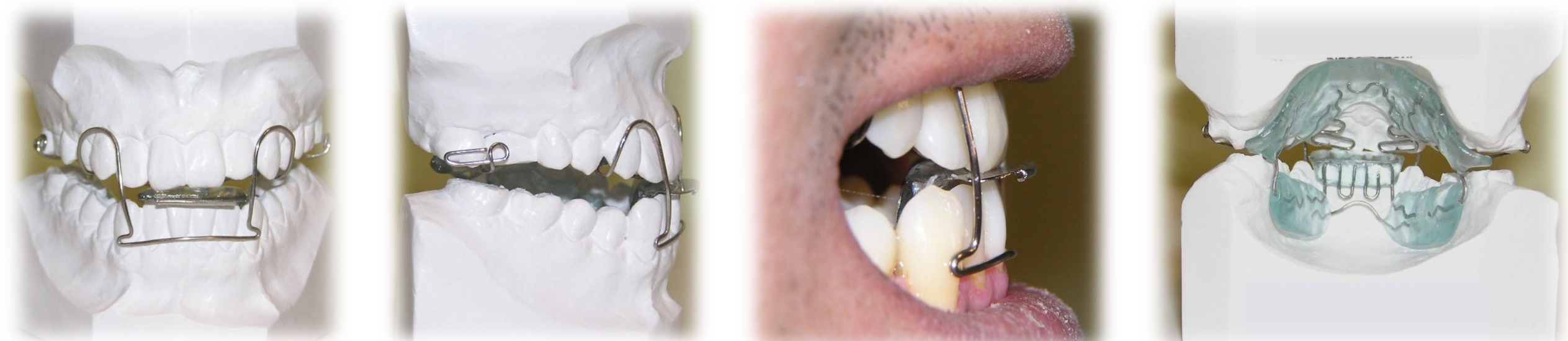
The Objective of the Orthopedic Appliances was to increase the vertical dimension through the Equiplan and orient the tongue backwards through the Wavy Bar, bringing with it the jaw. The Eschler's Arch stimulated the cervical of the lower incisors to relax the lateral pterygoid muscles, allowing mandibular recoil.

Orthodontic Braces finished the alignment and leveling of the teeth and the class 3 intermaxillary elastics helped in repositioning the teeth.

Initial Exams



1st Orthopedic Appliance



2nd Orthopedic Appliance



Orthodontic Braces



CONCLUSION

Class 3 malocclusion (Prognathism) can often be caused by a bad posture of the jaw and also of the tongue and be maintained by muscle action. Therefore, it should be evaluated with discretion so that cases that can be treated through devices are not conducted to perform surgeries, causing inconvenience to patients and exposing them to unnecessary risks.

The Functional Orthopedic Appliances are very efficient in the treatments as shown in this case, since they are well indicated, planned and executed.

References

Kug-Ho You,^a Kee-Joon Lee,^b Sang-Hwy Lee,^c and Hyoung-Seon Baik^d Seoul, Korea "Three-dimensional computed tomography analysis of mandibular morphology in patients with facial asymmetry and mandibular prognathism"

Simões W.A. Ortopedia Funcional dos Maxilares – vista através da Reabilitação Neuro – Oclusal. 3a ed. São Paulo: Santos;2003.

Peter Proffa; Florian Willb; Ivan Bokanc; Jochen Fangha'held; Tomas Gedrangee "Cranial Base Features in Skeletal Class III Patients"

Elias G. Katsavriasa and Demetrios J. Halazonetis. "Condyle and fossa shape in Class II and Class III skeletal patterns: A morphometric tomographic study"

Isabella Tollaro, MD, DDS Tiziano Baccetti, DDS, Lorenzo Franchi, DDS "Mandibular skeletal changes induced by early functional treatment of Class III malocclusion: A superimposition study"

Planas, P.C. Reabilitação Neuro-Oclusal. Tradução: Wilma A. Simões. São Paulo: Medsi, 1988. 293p.